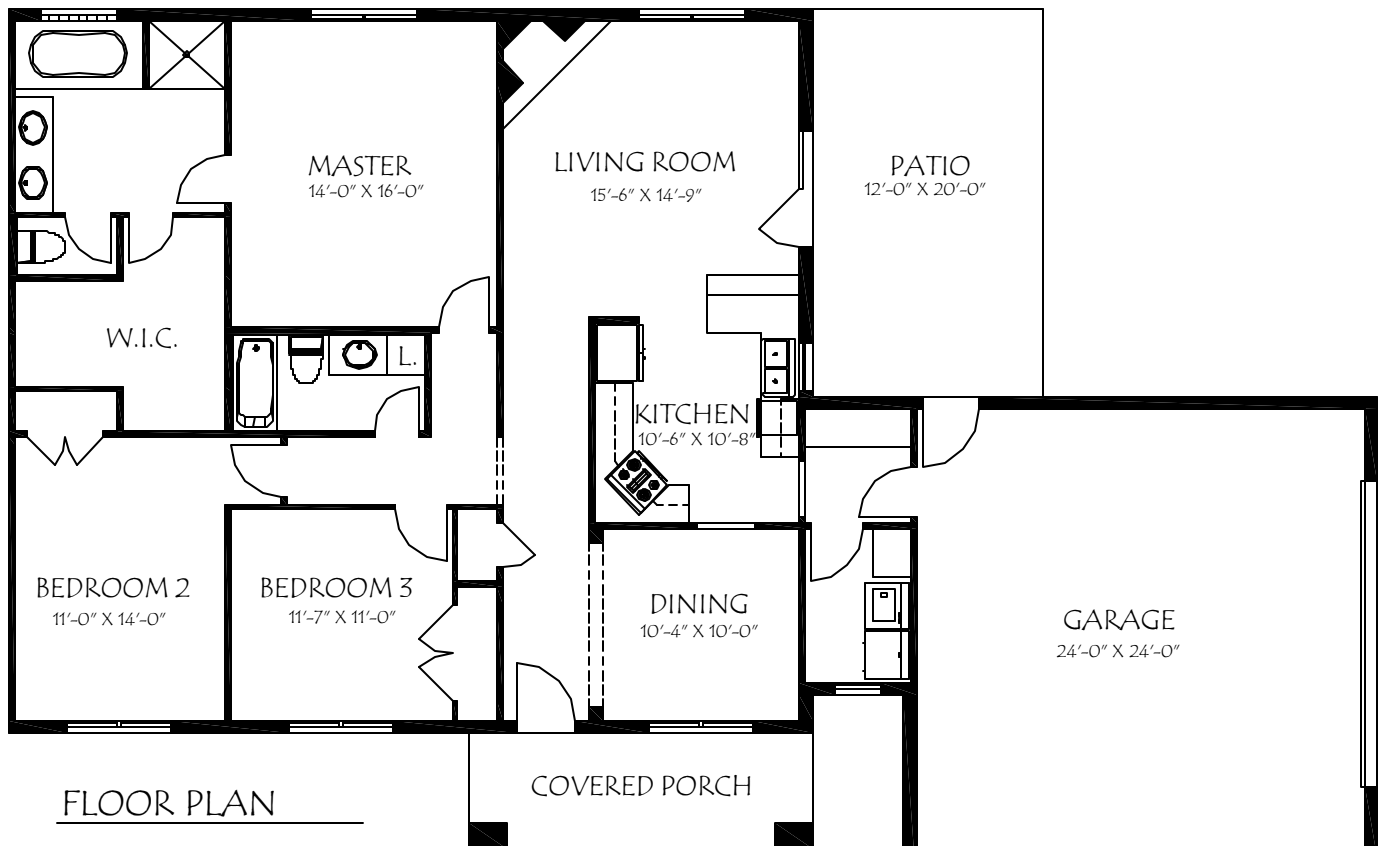


TOWNHOME FOR SALE



FRONT ELEVATION



FLOOR PLAN

- 1,634 sq. ft. Living Area.
- 3-Bedrooms, 2-Baths.
- Large Master Bath & Closet with Heated Floors & Walk-in Shower.
- Tiled Floors in Kitchen, Baths, & Foyer.
- Stone Kitchen Countertops.
- Gas Fireplace in Large Living Room.
- Pre-wired for Surround Sound & Satellite.
- Fully Networked & Internet Ready.
- Security System Ready.
- Pull-down Attic Storage.
- Oversized Garage for SUV's
- Masonry Exterior with Maintenance Free Soffits.
- Large Back Patio.
- Close to Schools & Colleges.
- Close to Parks.
- Convenient to Shopping.

\$ 269,900

CONTACT: MARK VAN ZEE